

Technical data sheet

Product features



Hood type dishwasher double skin softener heat recovery system 50x50 - 400 V

| | | |
|--------------|-----------------|----------|
| Model | SAP Code | 00011297 |
|--------------|-----------------|----------|



- To the product for free: 1x RM Clean+ 12 kg (00012271) and 1x RM Rinse+ 10 kg (00012273)
- Display type: LCD multifunction display
- Number of programs: 13
- Number of skin: 2
- Door clear height [mm]: 465
- Rack size [mm]: 500 x 500
- Water consumption of the washing cycle [l/basket]: 2,2
- Washing cycle time [s/basket]: 60-90-180
- Detergent and rinse pump system: ProDose - accurate dosing with a peristaltic pump
- Wash pump type: two-way - DuoFlow
- Self-cleaning cycle: Yes
- Drain filter: Evolution3 - double filtration with electronically controlled partial discharge before the rinsing phase ensures 0% loss of clean water to waste

| | | | |
|------------------------------|--------------------|--|-----------|
| SAP Code | 00011297 | Boiler power [kW] | 7.000 |
| Net Width [mm] | 836 | Basin volume [l] | 22 |
| Net Depth [mm] | 721 | Tank power [kW] | 2.500 |
| Net Height [mm] | 2265 | Water consumption of the washing cycle [l/basket] | 2,2 |
| Net Weight [kg] | 116.00 | Washing cycle time [s/basket] | 60-90-180 |
| Power electric [kW] | 10.200 | Door clear height [mm] | 465 |
| Loading | 400 V / 3N - 50 Hz | Rack size [mm] | 500 x 500 |
| Boiler capacity [l] | 12.00 | | |

Technical data sheet

Technical drawing

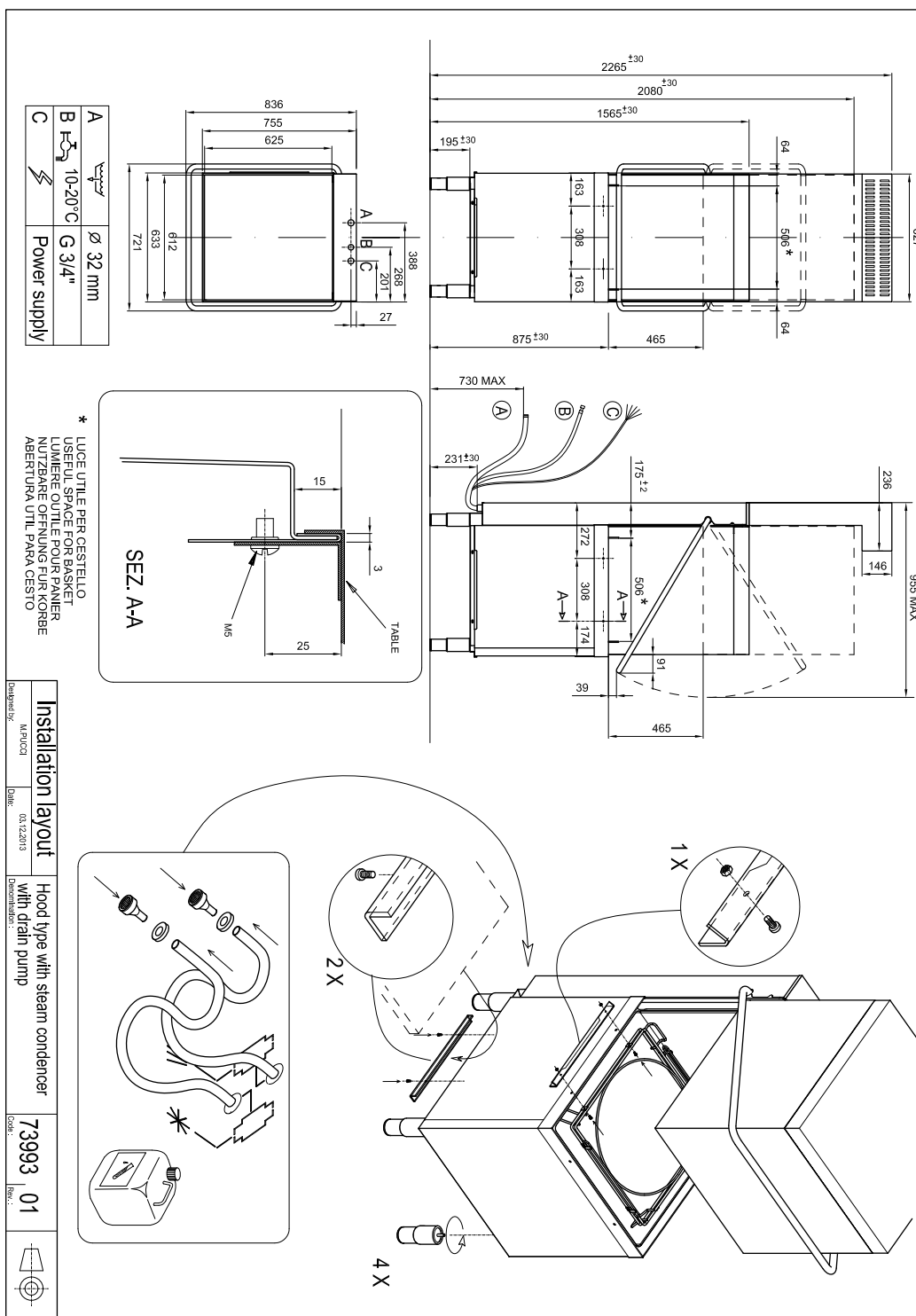


Hood type dishwasher double skin softener heat recovery system 50x50 - 400 V

Model

SAP Code

00011297



Technical data sheet

Product benefits



Hood type dishwasher double skin softener heat recovery system 50x50 - 400 V

| Model | SAP Code | 00011297 |
|-------|----------|----------|
|-------|----------|----------|

- 1 Stainless steel outer shell construction**
round construction with stainless steel, rounded edges, Deep-drawn bathtub
 - easy cleaning, high hygiene standard, long service life
- 2 Washing arms with a component, common for washing and rinsing**
upper and lower composite swivel arms common for washing and rinsing with clickclack system for easy removal
 - easy and safe handling during cleaning
 - increased user comfort
- 3 LED Display**
proScreen 4 local display + 2 LED strips
 - easy control of the dishwasher operation
 - continuous information on the status of the wash cycle
 - diagnostics in the event of a fault
- 4 Double pump**
unique two-way DuoFlow pump
 - distributes the water pressure evenly between the upper and lower arms; no noise; allows the use of a weaker pump
- 5 Molded basket supports**
guide rails for the baskets molded from the body of the dishwasher
 - high hygiene standard
 - longer service life
- 6 Detergent dispensers**
two detergent and rinse aid dispensers
 - precise chemical dosing by ProDose - precise dosing system for detergent and rinse aid by peristaltic pump setting of values via control panel

- 7 Double filter system**
the chamber filter and the waste filter together with the ArchiMedes system provide a discharge system with increased water purification efficiency
 - higher washing efficiency; longer life of the washing bath
- 8 Energy saving**
energy saving energy saving system due to lowering the temperature of the boiler
 - cost saving
- 9 Protection of fragile dishes**
softstart system for gradual start of washing programs to protect fragile dishes
 - protects stemmed glasses and other fragile utensils
- 10 Double shell construction**
stainless steel construction with insulated double jacket
 - quiet operation
 - energy saving
- 11 Fast heating**
performance management allows the current running of the boiler and basins body
 - quick first warm-up of the dishwasher
 - smooth operation
- 12 Possibility of recovery**
saving up to 40% of boiler energy improves the comfort environment of the workplace environment without steam saves water
 - saving on energy and water costs; environmentally friendly system; safe system; pleasant workplace

Technical data sheet

Technical parameters



Hood type dishwasher double skin softener heat recovery system 50x50 - 400 V

Model

SAP Code

00011297

1. SAP Code:

00011297

2. Net Width [mm]:

836

3. Net Depth [mm]:

721

4. Net Height [mm]:

2265

5. Net Weight [kg]:

116.00

6. Gross Width [mm]:

771

7. Gross depth [mm]:

886

8. Gross Height [mm]:

2314

9. Gross Weight [kg]:

126.00

10. Device type:

Electric unit

11. Control type:

Digital

12. Material:

Stainless steel

13. Power electric [kW]:

10.200

14. Loading:

400 V / 3N - 50 Hz

15. Number of programs:

13

16. Opening of device:

Flip up

17. Door clear height [mm]:

465

18. Adjustable feet:

Yes

19. Number of skin:

2

20. Self-cleaning cycle:

Yes

21. Boiler capacity [l]:

12.00

22. Boiler power [kW]:

7.000

23. Basin volume [l]:

22

24. Tank power [kW]:

2.500

25. Number of arms for both rinsing and washing:

2

26. Arm connection:

Hand loosen/tighten screw

27. Washing arm type:

Rotatable two-pronged

28. Washing arm material:

Stainless steel

Technical data sheet

Technical parameters



Hood type dishwasher double skin softener heat recovery system 50x50 - 400 V

Model

SAP Code

00011297

29. Atmospheric boiler with rinse pump:

Yes

30. Rinsing arm type:

Rotating two-pronged

31. Rinsing arm material:

Stainless steel

32. Deep drawn tank:

Yes

33. Rack support:

Pressed

34. Tank surface strainers:

stainless steel

35. Drain filter:

Evolution3 - double filtration with electronically controlled partial discharge before the rinsing phase ensures 0% loss of clean water to waste

36. Thermostop:

Yes

37. Boiler thermostat adjust:

Yes

38. Rack feed capacity:

60-40-20

39. Detergent and rinse pump system:

ProDose - accurate dosing with a peristaltic pump

40. Energy Saving system:

EnergySaving - Energy saving system due to lowering the boiler temperature

41. Rinse system:

ProRinse - composite arms common for rinsing and washing with geometry for spraying water in thin jets directly against the dishes, the rinsing pump ensures constant pressure

42. Heating system:

HotWash - System of simultaneous operation of the heating element of the bath and the boiler, reducing the time for starting the next cycle

43. Quick heating system:

QuickReady - System for rapid heating of water in the tank

44. Lift system:

ProGlide - Required lifting force equals 3 kg thanks to counterweights and gentle guidance, reduces operator fatigue

45. Heat recovery:

1 copper-aluminum battery - saving up to 40% of the energy needed to heat the water in the boiler, at the same time, by absorbing the released steam, it eliminates the need to use a hood

46. Hot water electric valve:

Yes

47. Closing door system:

ProSoft - Reduces noise, dampens the door stop, which could cause damage to dishes

48. Rack size [mm]:

500 x 500

Technical data sheet

Technical parameters



Hood type dishwasher double skin softener heat recovery system 50x50 - 400 V

Model

SAP Code

00011297

49. Built-in softener:

Yes

50. Display type:

LCD multifunction display

51. Location of control panel:

On the top

52. USB port:

Yes, for Firmware actualisation

53. Drain pump:

Yes

54. Self-diagnostics:

Yes

55. Wash pump type:

two-way - DuoFlow

56. Detergent dispenser:

Yes

57. Rinse aid dispenser:

Yes

58. Water consumption of the washing cycle [l/basket]:

2,2

59. Washing cycle time [s/basket]:

60-90-180

60. Rinse water temperature [°C]:

80

61. Standard equipment for device:

1x glass basket, 1x plate basket, 1x cutlery basket

62. Program ProSpeed:

Yes

63. Program ProFessional:

Yes

64. Program ProTemp:

Yes

65. Program ProClean:

Yes

66. Program ProDrain:

Yes

67. Program ProEco:

Yes

68. Program ProNew:

Yes

69. Program ProLong:

Yes

70. Program ProGlass:

Yes

71. Program ProWater:

Yes

72. Program ProActive:

Yes

73. Program ProSteel:

Yes

74. Program ProSan:

Yes

Technical data sheet

Technical parameters



Hood type dishwasher double skin softener heat recovery system 50x50 - 400 V

Model

SAP Code

00011297

75. Cross-section of conductors CU [mm²]:

2,5

– Výkon (kW): 11-17 (230 V); 19-30 (400 V)

77. Diameter nominal:

DN 50

76. Water supply connection:

3/4"